

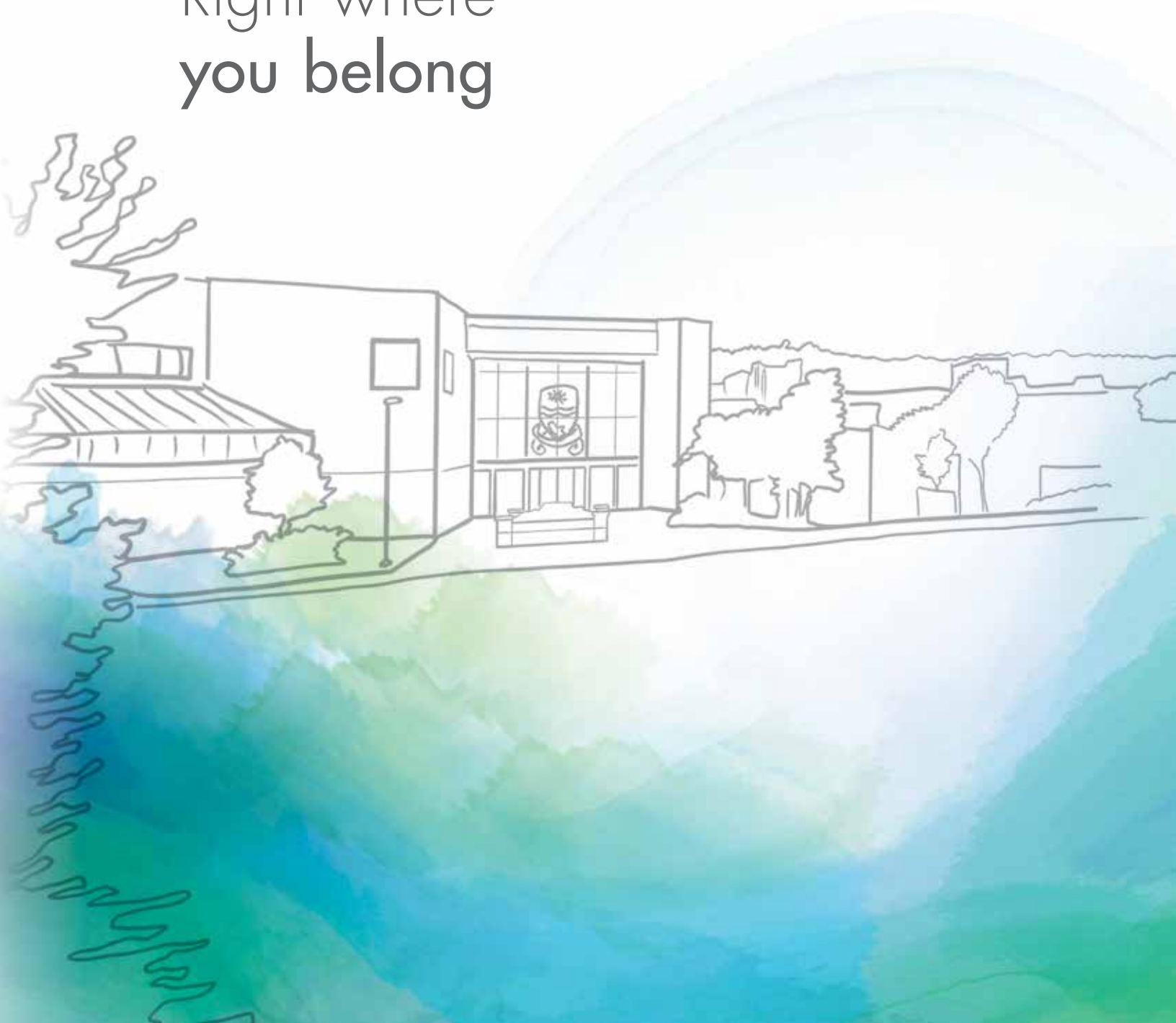
NIPISSING

U N I V E R S I T Y

MATURE / TRANSFER STUDENT GUIDE 2024

nipissingu.ca/mature-transfer

Right where
you belong





Top 10 Reasons to Choose Nipissing



1 Picture-Perfect Campus

Naturally beautiful, featuring state-of-the-art facilities.



2 Recognition of Prior Post-Secondary

Nipissing recognizes the wealth of knowledge and valuable perspectives that mature and transfer students bring to the classroom. Learn more about our transfer credit policies. ➤ [See page 22](#)

3 Top-Ranked Student Services

Benefit from the support of the #1 student services in Canada.* ➤ [See page 14](#)



4 Hands-On Learning

Get real-world experience through co-ops, placements, and internships. ➤ [See page 4](#)

5 Small Class Sizes

Small class sizes mean it's easy to meet new people, get to know your professors and engage in lively discussions.



6 Athletics

Go Lakers! Nipissing University has a wide range of intramural, club and varsity level sports to keep you on your game. ➤ nulakers.ca

* Among primarily undergraduate universities in Canada, Maclean's 2023



7 Friendly Community

From the moment you connect with Nipissing University, you'll immediately feel part of this friendly and supportive community.



8 Scholarships

Take advantage of over \$4.9 million in scholarships, bursaries and awards available to students. ➤ See page 10

9 Undergrad Research

Gain experience conducting graduate-level research as an undergraduate student.

10 Our Grads Get Jobs

Over 96% of Nipissing University students find employment within six months of graduating.

CONTENTS

Areas of Study/Programs	2	Studying at Nipissing	12	Concurrent Education	
Experiential Learning	4	North Bay, NUSU Student Centre,		Admission Requirements	20
Schulich School of Education	6	Athletics, Library, Residence,		Applying to Nipissing	21
Indigenous Education		Off Campus Living		Transferring from University	22
Degree/Diploma Programs	7	Student Services & Support	14	Transferring from College	23
Other Pathways to a Degree	9	Mature/Transfer Student Network	14	Mature Students	30
Scholarships	10	Map of Campus	18	Application Deadlines	31
Financial Planning	11			Checklist	32

Areas of Study

Average
Class Size
29

For more
information,
please visit
[nipissingu.ca/
programs](http://nipissingu.ca/programs)

We offer a variety of options to structure and customize your degree. For admissions requirements please see the charts at the end of this book starting on page 21. If you are transferring to Nipissing from another post-secondary institution, visit www.nipissingu.ca/mature-transfer

If you have questions, please contact the Recruitment Office at ninfo@nipissingu.ca or call (705) 474-3450 ext. 4200.

Arts and Science

Ancient Studies
Anthropology
Biology
Child and Family Studies
Computer Science
Data Science
Economics
English Studies
Environment and Physical Geography*
Environmental Biology and Technology*
Environmental Geography*
Fine Arts^Δ
Gender Equality and Social Justice
Geography
History
Indigenous Studies
Liberal Arts*
Liberal Science*
Mathematics
Philosophy
Political Science
Psychology
Religions and Cultures
Social Welfare and Social Development
Sociology

Education

For more on the offerings from the Schulich School of Education, see page 6.

Concurrent Education – Dual Degree

A 6-year program that lets you earn two degrees – an honours undergraduate degree in your chosen area of study (except Nursing and Social Work), and a Bachelor of Education degree. For admissions info see page 20.

Consecutive Education

A 2-year program for those students who have already completed a 3 or 4 year undergraduate degree.

Degree/Diploma Programs in Indigenous Education

See page 7 or visit nipissingu.ca/indigenouseducation

Professional Studies

Business

Concentrations in: Accounting, Entrepreneurship and Innovation Leadership, Finance, Human Resources, International Business, and Marketing

Ask about
the BBA Co-op
Program!

Complete paid
work terms while
earning your
degree.

Commerce

Available online/distance, as a Dual Degree with a BA or BSc on campus, or at a College Partner campus. Visit nipissingu.ca/business for details.

Criminal Justice

Streams in: Corrections, Criminal Justice Studies, Criminology, Legal Studies and Administration[∞], and Policing

Nursing

Physical and Health Education

Social Work

59%
of Nipissing Students in 22/23
**TRANSFERRED FROM
COLLEGE OR
UNIVERSITY**

**AVERAGE AGE
OF NIPISSING
TRANSFER STUDENTS
on campus in 22/23**

24

* Not available as a minor

^Δ Fine Arts Minors are available in: Art History and Visual Studies; and/or Studio Arts.

[∞] Legal Studies and Administration stream is available to students with a diploma in a Law Clerk program from an Ontario Community College



No specific degree or major is required for Law, Medical, MBA, or Veterinary schools. Nipissing University offers all prerequisite courses required for admission to these programs.

Minors

In addition to your main degree, you may choose to study additional subjects[†]. Minors are also available in the Faculty of Arts and Science areas of study (on the previous page) with a few exceptions marked by an asterisk.

Business Minors:

- Accounting
- Business Administration
- Corporate Social Responsibility
- Entrepreneurship
- Finance
- Human Resources
- International Business
- Marketing

Chemistry

Environmental Science

Film

Fine Arts Minors:

- Art History and Visual Studies
- Studio Arts

French

Human Rights

Legal Studies

Media, Culture, and Communications

Media, Representation and Social Justice

Physics

Spanish

Study of State Violence (War, Atrocity, and Genocide)

Certificates

Certificates are earned by completing a selection of courses within a degree program. Please see nipissingu.ca/programs to see which certificates are eligible with your program.

Applied Behaviour Analysis (ABA) – Lifespan

Archaeological Monitoring

Bilingualism

Conflict Resolution and Negotiation

Digital Classics

Digital Humanities

Early Intensive Behaviour Intervention (EIBI) – Autism Spectrum Disorders (ASD)

Environmental Management

Forest Resource Management and Conservation

Game Design and Development

Geomatics

Health Studies and Gerontology

iLEAD Business Experience

Neuroscience

Program Evaluation and Applied Research (PEAR)

Societies in Transition: Relationship, Reciprocity, and Reconciliation Histories

Study of State Violence (War, Atrocity, and Genocide)

Post-Baccalaureate Diplomas and Certificates

The School of Business offers a series of certificates and diplomas to meet the needs of students wishing to learn about business in shorter periods of time compared to a typical degree program. Applicants must have a minimum of a 3-year undergraduate degree from a recognized university. During their program, Post-Baccalaureate students can take part in one optional 4-month co-op internship. For further information please visit nipissingu.ca/business

Post-Baccalaureate Diplomas

Business Administration

Finance

Human Resource Management

International Business

Marketing

Post-Baccalaureate Certificates

Human Resource Management

General Management

Hands-On Learning

Experiential learning is one of the best ways to apply skills and concepts learned in the classroom to a practical setting. At Nipissing, we offer a wide range of hands-on learning opportunities, resulting in uniquely employable graduates who are ready to lead.

Co-ops, Placements, and Internships

In many programs, experiential learning opportunities are built right into the curriculum in the form of placements, volunteer opportunities, professional internships, co-ops and practicums. Through these experiences, students develop competencies in communication, critical thinking, collaboration, problem solving and leadership that help pave the way for future success.

BBA Co-op Program

Students in the School of Business BBA Co-op Program alternate academic terms on campus with full-time work terms. Students apply theoretical knowledge from course studies in the workplace and return to the classroom with practical workplace experience. Co-op helps students determine their strengths and interests, test-drive potential careers and gain valuable experience in their discipline. Questions? Email business@nipissingu.ca to learn more.

Nipissing hosts an annual Undergraduate Research Conference and invites undergraduate researchers from across Ontario to participate. Learn more at nipissingu.ca/ugrc

iLEAD Business Experience Certificate & Expeditions

Students pursuing the iLEAD Business Experience Certificate have the opportunity to Learn through Experience, Action and Discovery in the form of directed studies, workplace internships, overseas studies and volunteer service to others.

Nipissing offers
**UNDERGRADUATE
RESEARCH
OPPORTUNITIES**



Biidaaban Community Service-Learning (BCSL)

BCSL is a unique experiential learning program that allows students to volunteer within community organizations for course credit through project-based learning or placements. Students can also support Indigenous children and youth through the Biidaaban Youth Group and Biidaaban Academic Support programs. Participants receive training from Elders, Indigenous knowledge holders, faculty, educators and community members prior to their placements.

Interprofessional Simulation Centre

The new Interprofessional Simulation Centre offers an immersive and interactive learning environment designed to replicate a variety of real-life situations, procedures, and environments. The space features four rooms with life-like manikins that can mimic a variety of healthcare and other professional situations, and are used for both emergency and procedural training to enhance competency in practice. Using immersive projection technology, there are two dedicated spaces that can also be transformed into a healthcare settings such as a clinic or hospital. Additionally, these rooms can mimic any home, school, post-secondary institution or community setting, including disaster scenarios or large group gatherings. Students navigate the immersive environment using interactive touch points and 360-cameras.

Coming soon is a life-like home apartment setting that can simulate a client's home visit and assessment. The space can be staged to represent cases, assist with training social workers and home visitors, and mimic occupational-therapy and physiotherapy visits. The space can also be used to demonstrate challenging cases in the home such as crime scenes.

Biidaaban is an Anishnaabe word meaning "the point at which the light touches the earth at the break of dawn."



The Schulich School of Education

For more details on our offerings, including graduate studies and additional qualification courses for teachers, visit nipissingu.ca/schulich

The Schulich School of Education at Nipissing University is a recognized leader in the field of teacher education. Earn your Bachelor of Education (BEd) degree in one of the pre-eminent education programs in Ontario. Renowned for graduating exceedingly well-prepared and professionally-minded teachers, the Schulich School will prepare you for teaching in traditional and non-traditional environments, and provide you with transferable communication and collaborative skills that are essential to any career.

With a history of over 100 years of teacher education, combined with a rigorous offering of professional learning opportunities, the Schulich School of Education immerses teacher candidates in a series of experiential learning opportunities that may range from the integration of digital technology in the classroom, to national and international experiences, to polishing résumés and interview techniques prior to the annual education career fair. Schulich School of Education graduates maintain a distinct reputation as leading-edge and professional educators.

Earn your teaching certification through the Concurrent or the Consecutive BEd degree programs, or see page 7 for Degree/Diploma Programs in Indigenous Education.



Apply for a **\$7,500** Schulich Scholarship at nipissingu.ca/schulich/scholarships



Pursuing a Degree in Education

	Concurrent Bachelor of Education	Consecutive Bachelor of Education
Description	Students graduate with a Dual Degree – an honours undergraduate degree in their discipline of choice (except Nursing and Social Work) and a Bachelor of Education degree.	A program for those students who already have a completed 3 or 4 year undergraduate degree from Nipissing or another university.
Duration	6 years	2 years (following an undergraduate degree)
Practicum	19 weeks of practicum + 60 hours of Community Leadership Experience (CLE) English Public school boards, English Separate school boards, and First Nations or federally administered schools	
Division	Choose one of the following: P/J – (J/K to Grade 6) J/I – (Grades 4 to 10) P/J – French as a Second Language I/S – (Grades 7 to 12)	
How to Apply	Apply through ouac.on.ca by Jan 15, 2024	Apply through ouac.on.ca by Dec 1, 2023

P/J = Primary/Junior J/I = Junior/Intermediate I/S = Intermediate/Senior
 See page 20 for Concurrent Education Admission Requirements.

Degree/Diploma Programs in Indigenous Education

For more information about our summer diploma programs, including admission requirements, tuition, family support, deadlines and the application process, please visit nipissingu.ca/indigenouseducation

Indigenous Teacher Education Program (ITEP) Degree/Diploma

The Indigenous Teacher Education Program (ITEP) Degree/Diploma program is available for individuals of Indigenous ancestry. You are eligible if you have successfully completed one of the following from an accredited university or college:

- An undergraduate degree
- Early Childhood Education (ECE)
- Indigenous Classroom Assistant Diploma Program (ICADP)
(formerly Aboriginal/Native Classroom Assistant Diploma Program (ACADP/NCADP))
- Native Language Teaching Certificate (NLTC)
- Native Special Education Assistant Diploma Program (NSEADP)

This summer intensive program prepares individuals to develop teaching strategies, technological skills and curriculum knowledge within an Indigenous worldview. The program's structure allows working professionals to attend classes in the summer and to return to employment during the academic year. Upon completion, successful applicants will earn a Certificate of Qualification from the Ontario College of Teachers in the Primary/Junior Divisions.



(continued next page)

Degree/Diploma Programs in Indigenous Education (continued)

Indigenous Classroom Assistant Diploma Program (ICADP)

The Indigenous Classroom Assistant Diploma Program (ICADP) offers its candidates the opportunity to explore the role of the classroom assistant who works with Indigenous children in elementary public and First Nation schools.

Students explore culturally relevant pedagogical understandings in working with elementary students of all academic levels in numerous subject areas.

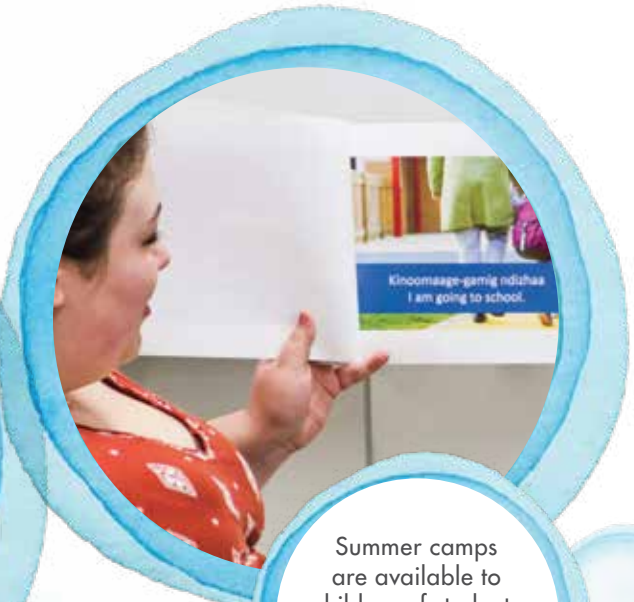
Practicum experiences allow students to connect educational theory with practical applications in the classroom and the entire school. Our graduates return to their classrooms with newly acquired skills and knowledge gained from the Indigenous Classroom Assistant Diploma Program to assist Indigenous children in elementary classrooms across the province.

Teacher of Indigenous Language as a Second Language (TILSL) Degree/Diploma

The TILSL Program provides students who are fluent in the languages of Anishnaabemwin, Cree, Lunaape, Mohawk and Cayuga the opportunity to earn a Diploma in Education or Bachelor of Education Degree from Nipissing University and a Certificate of Qualification and Registration from the Ontario College of Teachers: Indigenous Language (K-12). Indigenous Language teacher candidates will acquire a thorough understanding of culturally-based teaching strategies as well explore new technologies to deliver Indigenous traditional teachings and Indigenous languages as a subject within First Nation and Ontario public schools from Kindergarten to grade 12. The program's structure allows working professionals to attend classes in the summer and to return to employment during the academic year.



Students enrolled in Indigenous education programs are invited to bring their families with them into residence



Summer camps are available to children of students in Nipissing's Indigenous education programs

nipissingu.ca/indigenouseducation

Other Pathways to a Degree

College Transfer

Transferring from college? Nipissing has a number of agreements and pathways in place to help you apply the credits you have already earned in college towards a university degree. For more information, visit nipissingu.ca/collegetransfer

Indigenous Foundations Program (IFP)

indigenousprograms@nipissingu.ca • nipissingu.ca/indigenous

This full-time, first year transition-to-university program is designed for Indigenous students who are planning to pursue an undergraduate degree and want access to cultural, personal, and/or academic resources. Students who are transitioning from high school, upgrading, entering from a college program, or who have simply taken a break from their studies are eligible.

Students are part of a community of peers, staff, faculty and Elders while obtaining 24 credits toward a university degree in pre-selected courses for IFP students, and will:

- learn alongside other Indigenous students;
- attend orientation week to meet the professors and other students in the program;
- become more familiar with the university system; and
- gain confidence to be successful at university.

To apply to the Indigenous Foundations Program, prospective students can find the printable or fillable PDF application form at nipissingu.ca/indigenous. For more information, please contact the Student Success and Development Coordinator at indigenousprograms@nipissingu.ca

Summer Indigenous Institute

indigenousprograms@nipissingu.ca • nipissingu.ca/indigenous

This culturally-based transition program was created to support Indigenous students beginning a degree program at Nipissing University. The program provides students with an advanced look at university life while also giving them a head start on their credits and strengthening foundational skills for success. Courses are taught by Indigenous faculty and students have access to upper-year Indigenous student mentors. Enji giigdoyang, the Office of Indigenous Initiatives also offers academic, personal, and cultural support activities while students are in the program.

For more information or to apply to the Summer Indigenous Institute, prospective students can find the printable or fillable application form at nipissingu.ca/indigenous



Finance Your Education

Visit our online calculator for tuition and living expenses:

nipissingu.ca/tuition



Awards and Bursaries

Nipissing University offers additional funding to students on the basis of a range of criteria – academic merit, financial need, or a combination of extracurricular involvement, academics, demonstrated leadership ability or volunteerism. Once you're a Nipissing student, simply complete the Web Bursary application that is found on WebAdvisor in October to be considered for all awards and bursaries. For more information visit nipissingu.ca/bursaries

Guaranteed Entrance Scholarships for College Transfer Students

Your college grades can make a big difference. Scholarship averages are calculated using your overall final average based on all college courses completed as of June 30, 2024.

If you meet these criteria, you will be considered automatically – no application needed!

- Canadian and international college transfer applicants
- Applying directly into the first year of a full-time undergraduate degree program in North Bay
- Eligible to receive a maximum of 18 credits in transfer credit
- September entry

No application needed!

The chart below outlines the 2023-2024 guaranteed entrance scholarships. Please visit nipissingu.ca/collegetransferawards for the most up-to-date entrance awards information or email finaid@nipissingu.ca

Scholarship Average [†]	Year 1	Year 2*	Year 3*	Year 4*	Total Value
95% +	FREE TUITION	FREE TUITION	FREE TUITION	FREE TUITION	>\$23,000
90-94%	\$2,500	\$2,500	\$2,500	\$2,500	\$10,000
85-89%	\$1,500	\$1,500	\$1,500	\$1,500	\$6,000
80-84%	\$1,000	\$1,000	\$1,000	\$1,000	\$4,000

Notes:

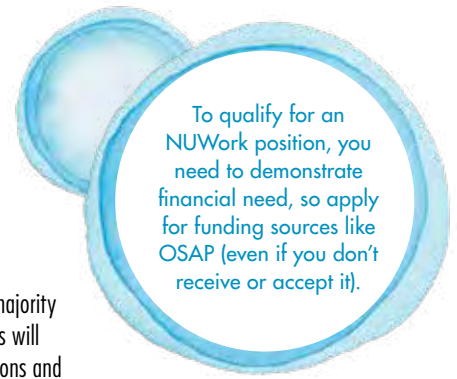
- Free tuition is based on domestic tuition rate and 100% course load.
- Students are only eligible for the first four years of undergraduate study.
- Concurrent BEd students in years 5 and 6 of study, and Consecutive BEd students in the 2-year program are not eligible for the renewal of these scholarships.

[†] Average based on your overall final average based on all college courses completed as of June 30.

* Based on cumulative GPA (CGPA) as recorded on April 30. Students must enroll in no less than 24 credits annually to retain scholarship eligibility.

OSAP

Apply for Government Grants and Loans (OSAP) at ontario.ca/OSAP



On-Campus Employment Opportunities

Nipissing University offers the NUWork program that enables students to work part-time on campus. The majority of positions begin in September so students are encouraged to apply in August. It is expected that students will have explored all possible funding options, including OSAP, before applying for this program. Find applications and more information at nipissingu.ca/nuwork

Create a Financial Plan

A plan helps you achieve your goals on time and on budget. This information is provided for guidance only. Figures are based on 2023-2024 costs for the 8-month academic term and are subject to change from year to year. Please visit nipissingu.ca/feesandpayments for the most current information.

Fees		Domestic Student Fees	International Student Fees
Full-time	Tuition (Full-time)	\$5,781 – \$8,082	\$23,000
	Ancillary Fees (includes a City of North Bay transit pass)	\$1,290	\$1,290
Part-time	Cost per course	\$578 – \$782	\$2300
	Ancillary Fees per course	\$108	\$108
Other Expenses			
Residence		\$6,397 – \$7,140 [†]	\$6,397 – \$7,140 [†]
Estimated Food Costs (approx. \$100/week)		\$3,400	\$3,400
Books and Supplies		\$650 – \$1,300	\$650 – \$1,300
Student Health Insurance		\$350 [∞]	\$350 [∞]
University Health Insurance Plan (International Students)		–	\$756 ^Δ
City of North Bay Bus Pass		\$223	\$223
On-Campus Parking (Optional)		\$257 – \$315	\$257 – \$315

[†] Includes refundable \$100 damage deposit.

^Δ UHIP (University Health Insurance Plan). UHIP is mandatory for full- and part-time international students: (\$94.50/month x 8 months = \$756); subject to change.

[∞] Student Insurance Plan (SIP) is \$350 which covers Sept 1 – Aug 31. Students may opt out with proof of existing insurance plan and be reimbursed.

Dining on Campus

As a student, you have a lot on your plate and your food service team wants to help. When you purchase a meal plan, you can dine and save, and they'll take care of the menu planning, grocery shopping, cooking and cleanup – all you have to do is show up with an appetite! Visit www.nipissingu.ca/diningoncampus to learn more.

For questions regarding your fees, contact the Finance Office at finance@nipissingu.ca or call (705) 474-3450 ext 4419

For information about awards and funding, including OSAP, contact Financial Aid at finaid@nipissingu.ca or (705) 474-3450 ext 4311

Studying at Nipissing

"Nipissing is so inclusive and involved in the community. The professors are always willing to help and learn your name which separates Nipissing from all the other universities. You can easily build lasting friendships and memories here. The campus is absolutely beautiful and the environment is profoundly welcoming. Transferring back home to Nipissing University has been the best decision for advancing my education and career goals. Nipissing should be at the top of everyone's list of universities to attend."
— Taylor B., University Transfer Student

North Bay

The City of North Bay, Ontario, is nestled between Lake Nipissing and Trout Lake and is surrounded by numerous protected natural areas, heritage forest parks and historical sites. Approximately a 3½ hour drive from Toronto or 4 hours from Ottawa, our friendly and inviting city is a popular year round destination. Offering plenty of activities, amenities and services, North Bay's vibrancy is only exceeded by its hospitality. Check out our community at www.northbay.ca

NUSU Student Centre

Situated at the corner of College Drive and Monastery Road, the Nipissing University Student Union (NUSU) Building is a defining feature on the approach to campus, welcoming students and visitors while symbolizing the importance of the student body at Nipissing University. This building features study nooks, a two-storey atrium, restaurant, nightclub, courtyard, outdoor patio, and study rooms. This 32,000 square-foot structure is a great place to study, connect, make memories, and attend concerts and seminars. We look forward to seeing you there!

Robert J. Surtees Student Athletics Centre

Whether you are a varsity athlete, gym enthusiast or weekend warrior, our state-of-the art athletics centre offers everything you need to stay active. The building is located in the heart of campus next to our artificial turf field, making it easy to cheer on our Lakers athletes. Join a fitness class, work out in the weight room, participate in an intramural, play squash or take in a varsity game. Membership is included in your student fees. Visit nulakers.ca for more info.



NUSU student Centre



Harris Learning Library

nipissingu.ca/library • libraryhelp@nipissingu.ca • 705.474.3450 ext. 4222

The Harris Learning Library is your gateway to library services, online instructional tutorials and information resources including electronic and print books, articles and streaming videos. Information resources can be accessed through OMNI (nipissingu.ca/omni), an easy to use academic search tool that provides access to over 23 million items from 18 of Ontario's university libraries. Friendly and knowledgeable staff members provide help in person, by email or phone whether you are on campus, studying online, or at a distance. For those not on campus, further information is available here: nipissingu.ca/library/services



Residence

Our residences are rated some of the finest in Canada. Transfer and mature students may apply to live in residence and will be considered if there is space available. The campus has both suite-style apartments (4 students per suite) and townhouse-style accommodations (6 students per house). All residences feature private bedrooms, full kitchens, furnished living and dining areas, bathrooms, high-speed internet, access to shared laundry rooms, common areas, and more. The townhouses are usually reserved for 2nd year students and up, and are open to mature and transfer students. To find out more visit nipissingu.ca/residence

Off Campus Living

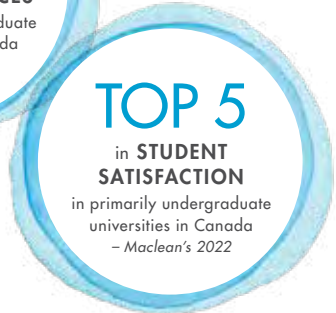
Off Campus Living (OCL) supports Nipissing University students who are considering living or currently living off campus through educational content, digital resources, workshops, and support connecting with local rentals. Visit ocl.nipissingu.ca to be connected to our partner rental listing service, for more information on resources, tips on renting an apartment or house, or email offcampusliving@nipissingu.ca with any inquiries.



Check out
Lakers games
online at
oua.yaretv.com

Student Support

You can count on our support – academically, culturally and personally. Student Development and Services and our other student supports are excellent resources that will help you maximize your success.



The Mature and Transfer Student Network

The Mature and Transfer Student Network is a transition program that supports mature students, college transfer students, and university transfer students as they complete their studies at Nipissing University. Students in the network are connected with a resource person in Student Learning and Transitions (SLT) to assist with their transition to campus life, provide one-on-one academic success coaching, and act as a point of referral to other campus support services. Students interested in support are encouraged to reach out via email.

Student Experience Coordinator, Transfer Student Success:
maturetransfer@nipissingu.ca
(705) 474-3450 ext. 4151



Academic Advising

nipissingu.ca/academicadvising

The academic advising team provides support for new mature and transfer students in regard to course selection, helping students understand their degree and program requirements, and to make informed decisions regarding academic priorities and goals.

An academic advisor will contact transfer students prior to course registration opening with more information about course selection and provide an individualized academic audit to show how their transfer credits will apply to their degree requirements.

Academic advisors can assist mature students with the transition to university studies by outlining course options, clarifying degree and program requirements, and assist with developing an academic plan based on their individual needs.



Accessibility Services

sas@nipissingu.ca • nipissingu.ca/sas

Student Accessibility Services (SAS) supports students with permanent and temporary disabilities and strives to provide an accessible, barrier-free learning environment. If you have (or suspect that you have) a disability, we encourage you to contact us. Our staff will be pleased to discuss academic accommodations and services available to support your academic and personal success.

Enji giigdoyang, the Office of Indigenous Initiatives

indigenousprograms@nipissingu.ca • nipissingu.ca/indigenous

In the Nbisiing dialect of Anishnaabemwin, Enji giigdoyang means “where we come to meet, discuss and talk about things.” We enhance the educational experience through a holistic approach to academic, personal, and cultural support and offer a range of programs both on-campus, online, and hybrid. We honour one another’s life experiences and invite you to connect on-campus or virtually with our community and guests at events throughout the year.

We offer:

- Enji giigdoyang Student Lounge / Virtual Student Lounge
- Indigenous Week and Enji giigdoyang Speaker Series
- Visiting Elders
- Experiential learning opportunities
- Activities to support academic, personal and cultural wellbeing
- Indigenous peer mentorship programs
- Indigenous Art and Speaker Series

Equity Centre

equitycentrenu@nipissingu.ca • (705) 474-3450 ext. 4213

The Equity Centre is a student-run inclusive space on campus where students can hang out, learn, or help organize events and campaigns that raise awareness of equity issues that impact the diverse communities at Nipissing University. The Centre provides education and resources, advocates on behalf of students and promotes allyship on campus. The Equity Centre and its events are open to everyone.

Health Centre

nipissingu.ca/healthcentre • (705) 474-7600 ext. 5261

A medical team is situated at the Campus Health Centre and is available to all students Monday to Friday. The Campus Health Centre provides quality services and health care delivery by a licensed physician and nurses.



International Student Support (ISS)

internationalstudent@nipissingu.ca • nipissingu.ca/international

The International Student Support (ISS) Department provides support services and programs to assist with intercultural development and integration for international students who come to Nipissing to earn their degree and for those who are here for an exchange or study abroad program.

If you are interested in internationalizing your degree at home, you can volunteer with the International Student Mentorship Program (ISMP) to help international students adjust to living and learning in Canada. You can also join the Nipissing Local Committee for the World University Service of Canada (WUSC) to work with a group of internationally minded individuals both on-campus and across Canada who believe "Education Changes the World" and have a passion to give back globally.



International Mobility – Study Abroad

internationalmobility@nipissingu.ca • nipissingu.ca/international

Internationalize your degree by studying abroad! We offer support services and programs to assist with intercultural development and integration, creating experiences that foster global citizenship. Upper year students can take advantage of our exchange partnerships with Australia, Barbados, Brazil, China, Costa Rica, Dominican Republic, Finland, France, Germany, India, Ireland, Japan, Netherlands, Norway, Philippines, South Africa, South Korea, Sweden and the United Kingdom.

Nipissing University Student Union (NUSU)

info@nusu.com • (705) 474-3450 ext. 4801 • nusu.com •    @NUSUtalks

All mature and transfer students are represented by the Nipissing University Student Union. We are dedicated to ensuring you are supported through academic excellence and social growth. NUSU is run by four elected student Executives who work with staff to ensure all students are supported.

Being involved on or off campus is one of the best ways to make the most of your university experience. There are opportunities to volunteer with NUSU either on the Board of Directors or as part of NUSU Crew.

NUSU provides a full range of services, activities, events, and political advocacy to improve the student experience, including:

- NUSU Student Centre
- Health & Dental Plan
- Student Food Bank
- Student Groups (Clubs & Societies)
- Community Involvement
- OWLS Week (Orientation Welcome Learning & Social)
- Volunteer Opportunities
- Academic & Government Advocacy



To find out
how you can
get involved,
visit nusu.com





Multi-Faith Space

Room H340

With a diverse community studying and working at Nipissing, the University has developed the Multi-Faith Space, offering an inclusive space on campus for people to practice all religions. The neutral environment allows for a comfortable place for prayer, meditation and reflection.

Sexual Violence Prevention and Education

svsupport@nipissingu.ca • nipissingu.ca/sexualviolence

Nipissing University is committed to creating and maintaining a safe environment for all students. Survivors are offered navigation of services on and off campus, assistance with arranging academic accommodations and help understanding reporting options. Additionally, there are free workshops on consent, healthy relationships and bystander intervention for all students.

Student Counselling

counselling@nipissingu.ca • nipissingu.ca/counselling

Student Counselling Services (SCS) works to support all students in achieving positive mental and emotional wellness. Our services are designed to be brief, collaborative, effective, and professional as we endeavor to do all we can to help students succeed in their academic and personal lives. SCS offers a variety of service pathway options including Dibaadan, Peer Support and Student Intervention Services. They are easily accessible and responsive to all students.



Student Intervention Services

sis@nipissingu.ca • nipissingu.ca/sis

Student Intervention Services (SIS) is offered to students who may be experiencing difficulty accessing the appropriate services, require a referral to services, require further collaboration within their current support services, or need assistance transitioning to or from the University (e.g. returning after being admitted to the hospital, registering again after withdrawing for mental health reasons, etc.) The relationship between the SIS staff and the student is collaborative, goal-oriented, supportive and voluntary.

Student Learning and Transitions

slt@nipissingu.ca • nipissingu.ca/slt

The goal of Student Learning and Transitions (SLT) is to support students' academic and personal success from Orientation to graduation. We provide one-on-one academic consultations, group workshops and tutorials, peer-to-peer support and tutoring, subject-specific resources and a referral point for all students. Our transition programs focus on the multiple changes that occur throughout a student's post-secondary experience and include facilitated programs, campus activities, and events that promote academic and social integration to your Nipissing University Lakers community.



Campus Map

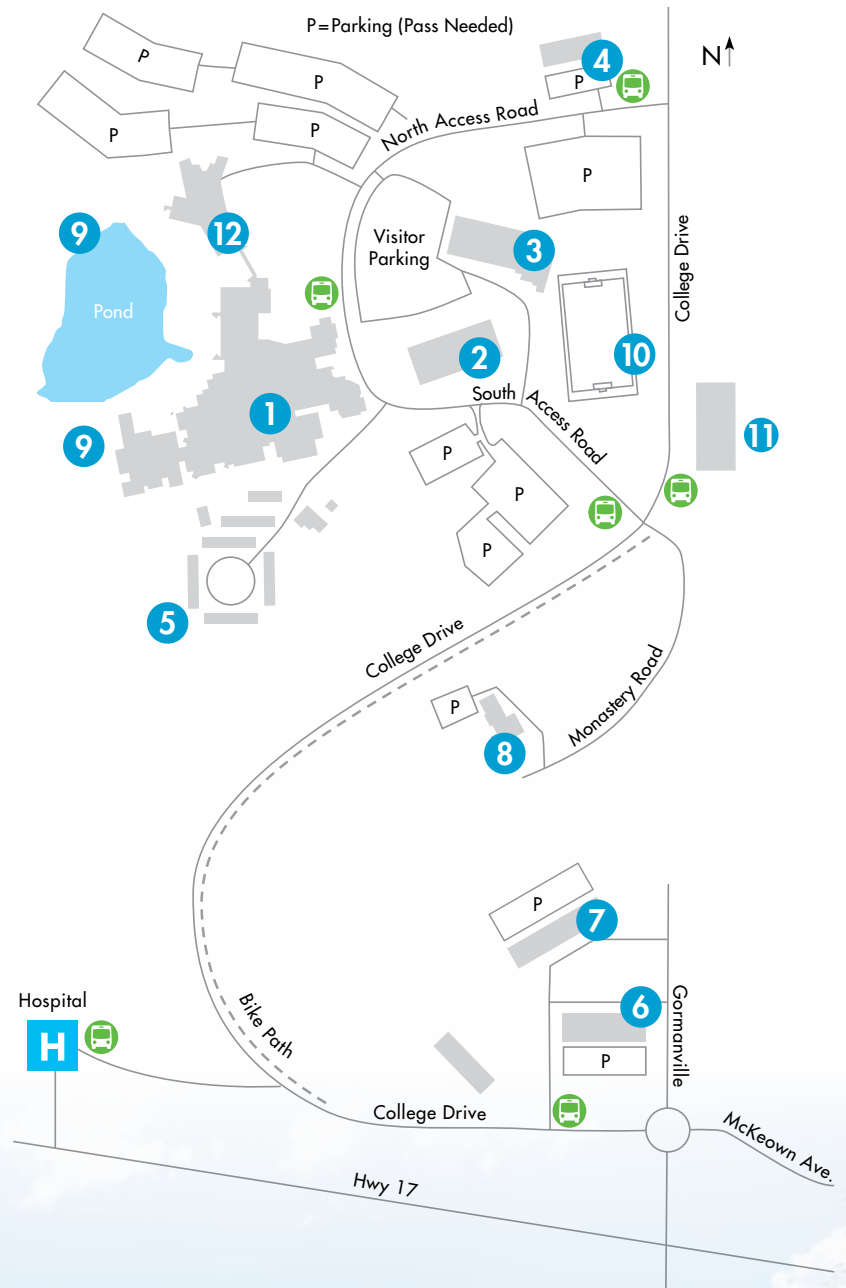
For virtual tours,
our interactive map,
or to book an in-person
tour of our beautiful
campus, visit:
[nipissingu.ca
/campustours](http://nipissingu.ca/campustours)

We are proud to
share our campus with
Canadore College,
which adds to the
vibrancy of our
campus community

20 km
of hiking/Nordic ski
trails on campus



- 1 Nipissing Main Building
- 2 Harris Learning Library
- 3 R.J. Surtees Student Athletics Centre
- 4 Governors Residence
- 5 Townhouse Residence Complex (TRC)
- 6 Founders Residence
- 7 Chancellors Residence
- 8 Monastery Hall (Fine Arts)
- 9 Paths to 20 km of trails
- 10 Turf Field
- 11 NUSU Student Centre
- 12 Canadore College
-  City Bus Stop



Concurrent Education Admission Requirements

Transferring from	Minimum Average for admission consideration	Prerequisites
College – ECE diploma	70%	<p>Must be eligible for admission consideration to Nipissing University's Bachelor of Arts (BA) Honours Specialization degree program based on their ECE diploma. Applicants must present:</p> <ul style="list-style-type: none"> • minimum of 70% in one semester of English or Communications at the college level (not Academic and Career Entrance (ACE) Program courses) or ENG4U from high school with a minimum grade of 70% • minimum 60% in one semester of Mathematics (not Academic and Career Entrance (ACE) Program courses or Statistics) at the college level or a 3U or 3M Mathematics from high school with a minimum grade of 60%
College – any program	70%	<p>Applicants must present:</p> <ul style="list-style-type: none"> • minimum of 70% in one semester of English or Communications at the college level (not Academic and Career Entrance (ACE) Program courses) or ENG4U from high school with a minimum grade of 70% • minimum 60% in one semester of Mathematics (not Academic and Career Entrance (ACE) Program courses or Statistics) at the college level or a 3U or 3M Mathematics from high school with a minimum grade of 60%
University	70%	<p>Applicants must present:</p> <ul style="list-style-type: none"> • minimum of 18 credits of undergraduate study, and no more than 72 university credits (including transfer credits) • minimum of 60% in 3U or 3M Mathematics (or equivalent) or a university or college level Mathematics (not Academic and Career Entrance (ACE) Program courses or Statistics) with a minimum grade of 60%
Another Nipissing program (Upper Year Admission)	70%	<p>Application forms are available from the Office of the Registrar and must be submitted by April 1. Applicants must present:</p> <ul style="list-style-type: none"> • minimum of 18 credits of undergraduate study, and no more than 72 university credits (including transfer credits) • minimum of 60% in 3U or 3M Mathematics (or equivalent) or a university or college level Mathematics (not Academic and Career Entrance (ACE) Program courses or Statistics) with a minimum grade of 60%

Applying to Nipissing

Full-Time vs Part-Time

Canadian applicants (citizen or permanent resident)			
	Maximum number of courses allowed per term	How to apply for September entry	How to apply for January, or Spring/Summer entry
Full-Time	5 courses	OUAC Undergraduate Application ouac.on.ca	nipissingu.ca/registrarforms
Part-Time	2 courses	nipissingu.ca/registrarforms	

- Full-time allows a student to register for the maximum number of courses per term (ie. 5 courses in each of the Fall and Winter terms)
- Part-time allows a student to study at their own pace by taking one or two courses each term
- Not all programs are available on a part-time basis

Not sure whether to apply for full-time or part-time studies? Why not choose full-time! This will give you the flexibility to choose how many courses to register in; from one course all the way to the maximum available for the term you were admitted to.

Questions? Contact the Student Recruitment Office at nuinfo@nipissingu.ca or call (705) 474-3450 ext. 4200

International applicants (studying in Canada on a study permit or studying in another country with no current status in Canada)		
	Maximum number of courses allowed per term	How to apply for September or January entry
Full-Time	5 courses	www.nipissingu.ca/applyintl

Please visit www.nipissingu.ca/intl or email internationaladmiss@nipissingu.ca for more information.

International students should see our International Guide available at nipissingu.ca/intl



Transferring from University

Applicants who are attending or have attended another university may be considered for admission to Nipissing University with transfer credit for courses already completed. Specific subject requirements for particular degrees must be met through prior grade 12 studies or equivalent courses at the university level. Please visit www.nipissingu.ca/admissionschart or contact the Admissions Office for further details. Admission to some programs is highly competitive and admission is selective, therefore, meeting the minimum requirements will not guarantee admission to certain programs.



Minimum grade for course transfer	Transfer credits	Non-transferable credits
60%	Transfer credit is assessed on a case by case basis. Attempts will be made to provide specific course equivalencies. If a specific equivalence to a course is not available, Nipissing will attempt to award an unspecified, non-equivalent course.	Transfer credit will not normally be granted for practical or clinical courses taken in specific areas such as Engineering, Education, Dance, etc. Credits for courses taken in the areas of Physical and Health Education or Nursing* may be granted when applied to the same program at Nipissing.
50%	Transfer credit will normally be awarded for a degree credit course provided a grade of "C" or higher was achieved. A course with a grade of "D" may be considered for credit only when there are an equal number of course credits with "B" grades or higher on the same transcript.	

*Applicants seeking transfer credit when admitted to the Bachelor of Science in Nursing program may only receive credit for required courses that have been completed within the last ten (10) years.

Motion capture equipment at the Centre for Physical and Health Education facility.



See Nipissing Fine Arts student artwork on Instagram: [@nipissingfinearts](https://www.instagram.com/nipissingfinearts)



Transferring from College

Applicants to Nipissing University who have studied at an Ontario College of Applied Arts and Technology may qualify for admission if they meet the minimum admissions requirements outlined on the next few pages. Specific subject requirements for particular degrees must be met through prior grade 12 studies or equivalent courses at the college level. Meeting the minimum requirements will not guarantee admission to certain programs. Admission to some programs is highly competitive and admission is selective.

Transfer applicants not following one of the pathways outlined below will have their transfer credit assessed on an individual basis. Transfer credit will be considered for a course provided a grade of “B” or higher was achieved. A course with a grade of “C” may be considered only when there are an equal number of course equivalents with “A” grades. The granting of transfer credits will vary depending on the degree program and major to which the applicant is admitted. Nipissing University residency requirements apply.

Transferring from College – General Policies

Diploma Completed	Nipissing Degree	Prerequisites	Minimum Admission Average	Transfer Credit
3 year diploma	Any	Dependent on degree program applied to. Visit nipissingu.ca/admissionschart or contact the Admissions Office for further details.	70%	Up to 30 credits (1 year)
2 year diploma (2 years of a 3 year diploma)				Up to 18 credits (0.6 year)
1 year of college or certificate				Up to 9 credits (0.3 year)
Advanced Technology	Bachelor of Business Administration ³	Not applicable	70%	Up to 60 credits (2 years)
	Bachelor of Commerce ⁴			Up to 45 credits (1.5 years)
Advertising and Marketing Communication	Bachelor of Arts (English Studies)	Not applicable	72%	Up to 45 credits (1.5 years)
BTEC Higher National Diploma	Bachelor of Business Administration ³	Not applicable	75 points	Up to 60 credits (2 years)
	Bachelor of Commerce ⁴			Up to 45 credits (1.5 years)
Behavioural Science (2 year)	Bachelor of Arts – Honours Specialization or Specialization (Child and Family Studies)	Not applicable	70%	Up to 45 credits (1.5 years)
Behavioural Science (3 year)	Bachelor of Arts – Honours Specialization or Specialization (Child and Family Studies)	Not applicable	70%	Up to 60 credits (2 years)
Computer Engineering Technician	Bachelor of Science – 3-year degree (Computer Science)	Not applicable	70%	Up to 30 credits (1 year)
Computer Engineering Technology	Bachelor of Science – Honours Specialization or Specialization (Computer Science)	Not applicable	75%	Up to 45 credits (1.5 years)

Transferring from College – General Policies (continued)

Diploma Completed	Nipissing Degree	Prerequisites	Minimum Admission Average	Transfer Credit
Business (3 year)	Bachelor of Business Administration ³	Not applicable	72%	Up to 60 credits (2 years)
	Bachelor of Commerce (4-year) ⁴			Up to 60 credits (2 years)
	Bachelor of Commerce (3-year) ⁴			Up to 45 credits (1.5 years)
Business (2 year)	Bachelor of Business Administration ³	Not applicable	72%	Up to 45 credits (1.5 years)
	Bachelor of Commerce (4-year) ⁴			Up to 45 credits (1.5 years)
	Bachelor of Commerce (3-year) ⁴			Up to 30 credits (1 year)
Certified Aboriginal Financial Manager	Bachelor of Business Administration ³	Not applicable	65% in each course	Up to 45 credits (1.5 years)
	Bachelor of Commerce ⁴			Up to 30 credits (1 year)
Child and Youth Care	Bachelor of Arts – 4 year (Child and Family Studies)	Not applicable	70%	Up to 60 credits (2 years)
	Bachelor of Arts – 3 year (Child and Family Studies)			Up to 45 credits (1.5 years)
	Bachelor of Social Work ¹			Up to 30 credits (1 year)
Community and Justice Services	Bachelor of Arts (Criminal Justice) – Corrections stream	Not applicable	75%	Up to 60 credits (2 years) ²
Developmental Services Worker	Bachelor of Arts – Honours Specialization or Specialization (Child and Family Studies) ⁶	Not applicable	70%	Up to 45 credits (1.5 years)
	Bachelor of Arts	Dependent on degree program applied to. Visit nipissingu.ca/admissionschart or contact the Admissions Office for further details.		Up to 30 credits (1 year)
	Bachelor of Social Work ¹	Not applicable		Up to 30 credits (1 year)
Drug and Alcohol Counsellor	Bachelor of Arts – Honours Specialization or Specialization (Child and Family Studies) ⁶	Not applicable	70%	Up to 45 credits (1.5 years)
	Bachelor of Arts	Dependent on degree program applied to. Visit nipissingu.ca/admissionschart or contact the Admissions Office for further details.		Up to 30 credits (1 year)
Early Childhood Education	Bachelor of Arts – Honours Specialization or Specialization (Child and Family Studies) ⁶	Not applicable	70%	Up to 45 credits (1.5 years)
	Bachelor of Arts	Dependent on degree program applied to. Visit nipissingu.ca/admissionschart or contact the Admissions Office for further details.		Up to 30 credits (1 year)
Educational Assistant	Bachelor of Arts – Honours Specialization or Specialization (Child and Family Studies) ⁶	Not applicable	70%	Up to 45 credits (1.5 years)
	Bachelor of Arts	Dependent on degree program applied to. Visit nipissingu.ca/admissionschart or contact the Admissions Office for further details.		Up to 30 credits (1 year)

Transferring from College – General Policies (continued)

Diploma Completed	Nipissing Degree	Prerequisites	Minimum Admission Average	Transfer Credit
Fine Arts (3 year)	Bachelor of Fine Arts ⁵	Not applicable	70%	Up to 60 credits (2 years)
	Bachelor of Arts (Fine Arts)			Up to 42 credits (1.4 years)
Fine Arts focused diploma (2 year)	Bachelor of Arts (Fine Arts)	Not applicable	70%	Up to 30 credits (1 year)
Graphic Design	Bachelor of Fine Arts ⁵	Not applicable	70%	Up to 54 credits (1.8 years)
	Bachelor of Arts – Major or Specialization in Fine Arts – Studio stream			
Indigenous Wellness and Addictions Prevention	Bachelor of Arts – Honours Specialization or Specialization (Child and Family Studies) ⁶	Not applicable	70%	Up to 45 credits (1.5 years)
	Bachelor of Arts	Dependent on degree program applied to. Visit nipissingu.ca/admissionschart or contact the Admissions Office for further details.		Up to 30 credits (1 year)
	Bachelor of Social Work ¹	Not applicable		Up to 30 credits (1 year)
Law Clerk	Bachelor of Arts (Criminal Justice) – Legal Studies and Administration stream	Not applicable	75%	Up to 45 credits (1.5 years) ²
Mental Health and Addictions Worker	Bachelor of Arts – Honours Specialization or Specialization (Child and Family Studies) ⁶	Not applicable	70%	Up to 45 credits (1.5 years)
	Bachelor of Arts	Dependent on degree program applied to. Visit nipissingu.ca/admissionschart or contact the Admissions Office for further details.		Up to 30 credits (1 year)
	Bachelor of Social Work ¹	Not applicable		Up to 30 credits (1 year)
Police Foundations	Bachelor of Arts (Criminal Justice) – Policing stream	Not applicable	75%	Up to 60 credits (2 years) ²

Transferring from College – General Policies (continued)

Diploma Completed	Nipissing Degree	Prerequisites	Minimum Admission Average	Transfer Credit
Practical Nursing	Bachelor of Science in Nursing – Part-time Blended Delivery RPN Bridging program	Applicants must have graduated from an Ontario RPN program, and be a current registered member in good standing with the College of Nurses in Ontario (CNO) as an RPN, and be an employee (with a letter of support) of one Nipissing's partner health care agencies. Visit nipissingu.ca/rpn-bscn for a list of partners. This is a limited enrollment program. The minimum GPA required for admission consideration may be higher than the stated minimum. There are two intakes per year (January and September).	70%	Up to 30 credits (1 year)
Social Service Worker	Bachelor of Arts – Honours Specialization or Specialization (Child and Family Studies) ⁶	Not applicable	70%	Up to 45 credits (1.5 years)
	Bachelor of Arts – Honours Specialization or Specialization (Social Welfare and Social Development)			Ranges from 30 credits (1 year) to a maximum of 60 credits (2 years) dependent upon final diploma average.
	Bachelor of Arts	Dependent on degree program applied to. Visit nipissingu.ca/admissionschart or contact the Admissions Office for further details.		Up to 30 credits (1 year)
	Bachelor of Social Work ¹	Not applicable		Up to 30 credits (1 year)
Stage and Screen (3 years)	Bachelor of Arts (English Studies)	Not applicable	72%	Up to 60 credits (2 years)
Stage and Screen (2 year)				Up to 45 credits (1.5 years)

- During Year 2 of the Bachelor of Social Work program, students must apply for admission consideration to the professional years (Years 3 & 4) of the program. Admission to the first or second year of the Bachelor of Social Work program does not guarantee acceptance into the professional years.
- Other programs can be applied to with a 70% average and a maximum of 30 transfer credits granted.
- Admitted BBA students complete their program at Nipissing University in North Bay.
- Admitted BComm students complete their program through one of our college partners or online as an independent learner.
- All students admitted to the BFA are required to successfully complete the BFA Portfolio Assessment the year prior to their final year of study in order to remain in the BFA program. Students who are required to withdraw from the BFA may be eligible to continue in the BA in Fine Arts Major or Specialization program.
- Admitted students who also complete an Autism & Behavioural Science or a Children's Mental Health one-year post-graduate certificate program at a recognized Ontario college with a cumulative average of 70% or better will be eligible to receive an additional 15 transfer credits (0.5 year)

Transferring from College – College Specific Policies

Diploma Completed	Nipissing Degree	Prerequisites	Minimum Admission Average	Transfer Credit
Algonquin College				
Business (2 year)	Bachelor of Commerce (Distance)	Not applicable	78%	Up to 60 credits (2 years)
Canadore College				
Biotechnology Technician or Technologist	Bachelor of Science – Honours Specialization or Specialization in Biology	Not applicable	72%	Up to 60 credits (2 years)
	Bachelor of Science – Honours Specialization or Specialization in Environmental Biology and Technology			
Business (2 year)	Bachelor of Commerce	Not applicable	78%	Up to 60 credits (2 years)
Environmental Protection Technician	Bachelor of Science – Honours Specialization or Specialization in Biology	Not applicable	72%	Up to 60 credits (2 years)
	Bachelor of Science – Honours Specialization or Specialization in Environmental Biology and Technology			
Recreation and Leisure Services	Bachelor of Physical and Health Education	Not applicable	72%	Up to 42 credits (1.4 years)
Recreation Therapy				
Strength and Sport Conditioning				
Occupational Therapist Assistant and Physiotherapist Assistant	Bachelor of Physical and Health Education	Not applicable	72%	Up to 30 credits (1 year)
	Bachelor of Physical and Health Education with Concurrent Education	Minimum 70% in one semester of English or Communications at the college level (not ACE) or ENG4U at the high school level. Minimum 60% in one semester of Mathematics (not ACE or Statistics) at the college level or a 3U or 3M Mathematics at the high school level	75%	
Confederation College				
Onajigawin Indigenous Services (OIS)	Bachelor of Social Work ¹	Not applicable	70%	Up to 30 credits (1 year)

Transferring from College – College Specific Policies (continued)

Georgian College				
Fine Arts (Advanced)	Bachelor of Fine Arts ⁵	Not applicable	70%	Up to 66 credits (2.2 years)
	Bachelor of Arts (Fine Arts)			Up to 48 credits (1.6 years)
Fine Arts	Bachelor of Fine Arts ⁵			Up to 42 credits (1.4 years)
Fleming College (Haliburton School of Art + Design)				
Visual and Creative Arts	Bachelor of Fine Arts ⁵	Not applicable	70%	Up to 33 credits (1.1 years)
	Bachelor of Arts (Fine Arts)			
Humber College				
Computer Engineering Technology	Bachelor of Science – Honours Specialization or Specialization in Computer Science	Not applicable	70%	Up to 60 credits (2 years)
Electromechanical Engineering Technology	Bachelor of Science – Honours Specialization or Specialization in Computer Science			
Lambton College				
Business (2 year)	Bachelor of Commerce (4 year)	Not applicable	78%	Up to 60 credits (2 years)
Esports Entrepreneurship and Administration (2 year)	Bachelor of Commerce (4 year)	Not applicable	70%	Up to 45 credits (1.5 years)
	Bachelor of Commerce (3 year)			Up to 30 credits (1 year)
St. Clair College				
Business (2 year)	Bachelor of Commerce (4 year)	Not applicable	80%	Up to 60 credits (2 years)
Esports Administration and Entrepreneurship (2 year)	Bachelor of Commerce (3 year)		70%	Up to 30 credits (1 year)
Esports Administration and Entrepreneurship (3 year)	Bachelor of Commerce (3 year)		70%	Up to 45 credits (1.5 years)
Toronto Film School				
Graphic Design and Interactive Media	Any 4 year Bachelor degree	Dependent on degree program applied to. Visit nipissingu.ca/admissionschart or contact the Admissions Office for further details.	72%	Up to 30 credits (1 year)
	Any 3 year Bachelor degree			Up to 18 credits (0.5 year)
Fashion Design Film Production Marketing for Fashion and Entertainment Writing for Film and Television	Any 4 year Bachelor degree		72%	Up to 45 credits (1.5 years)
	Any 3 year Bachelor degree		Up to 30 credits (1 year)	

⁵ All students admitted to the BFA are required to successfully complete the BFA Portfolio Assessment the year prior to their final year of study in order to remain in the BFA program. Students who are required to withdraw from the BFA may be eligible to continue in the BA in Fine Arts Major or Specialization program.

Other Transfer Policies

Certified General Accountants of Ontario (CGA)

Applicants to the Bachelor of Commerce or Bachelor of Business Administration programs who have completed specific courses, with a minimum 60% average, through the Certified General Accountants of Ontario (CGA), will be eligible for advanced standing credit. Courses eligible for advanced standing consideration can be found at nipissingu.ca/cgatocpa

Post-Diploma Accounting Courses

Applicants with post diploma courses in Accounting where a grade of 70% or better has been achieved will be recommended to be granted up to 15 transfer credits. The recommendation will be determined by the director or designate of the School of Business, decided by the Registrar's Office and will be consistent with existing transfer credit practices.

Admission with Transfer Credit

Applicants deemed eligible for admission with transfer credit must submit recently-dated transcripts of their academic record directly to the Office of the Registrar. Applicants presenting transcripts for studies completed outside of North America must have their transcripts assessed (Credential Evaluation Report, including a Course-By-Course Analysis) by World Education Services (WES) – www.wes.org/ca. An Academic Calendar from their former institution(s) containing descriptions of the completed courses may be required. Those applicants who are eligible for transfer credits will be notified of their eligibility. The application of transfer credits to a degree program will vary depending on the degree program and major to which the applicant is admitted. Changing degree programs or majors may mean a loss of or change to the credits awarded. Nipissing University degree residency requirements will apply.

Applicants from Accredited Canadian Colleges

Applicants to Nipissing University who have studied at an accredited Canadian college may qualify for admission to degree programs if they meet the minimum admissions requirements as outlined in the Ontario College of Applied Arts and Technology (CAAT) admission section above.

Bible College Applicants

Applicants from Bible Colleges and similar religious based institutions that are accredited with the Association for Biblical Higher Education will follow the same policy for admission and advanced standing as for the CAATs.

No credit will be granted for courses in church education or administration, pastoral studies, or courses intended to promote a particular doctrinal or denominational belief.

Nipissing has over
40,000 alumni
worldwide. Connect with fellow
students and alumni through the
NU Café networking platform.
Learn more at
nipissingu.ca/nucafe



Other Transfer Policies (continued)

Mature Student Applicants

Applicants who, according to the Office of the Registrar, do not qualify for undergraduate admission as a regularly qualified applicant may be considered for admission consideration as a mature student if they:

- will be 20 years of age or older by the end of the semester in which they wish to enrol;
- have been away from formal education (secondary school, community college, etc.) for at least the previous two years; and
- are a Canadian citizen or permanent resident.

Mature student applicants to Bachelor of Science degrees or Bachelor of Arts degrees in Computer Science, Data Science, Economics or Mathematics, must present the 4U or equivalent program specific prerequisites as listed in the Admission Chart in the Academic Calendar.

Mature student applicants to limited enrollment programs (Nursing and Physical and Health Education) are not able to apply for direct entry admission consideration to these programs. Mature student applicants interested in these programs may be admitted to another program and apply for transfer consideration for the following year. For transfer consideration applicants will need to present the 4U or equivalent program specific prerequisites as listed in the Admission Chart in the Academic Calendar.

Mature student applicants are still required to provide transcripts of marks for studies that have been previously completed or undertaken.

Mature students who qualify for admission can be admitted full-time on probation with a reduced course load to a maximum of 24 credits. Upon successful completion of the 18 credits and having cleared academic probation, mature students are eligible for a full 30 credit load status.

Applicants with International Credentials

Domestic (Canadian Citizen or Permanent Resident) applicants

All international college and university transcripts must be assessed (Credential Evaluation Report, including a Course-By-Course Analysis) by World Education Services (WES) – wes.org/ca

International applicants (currently in Canada or outside of Canada)

All international college and university transcripts must be uploaded through Nipissing's International Admission Portal at www.nipissingu.ca/applyintl. Instructions will be provided as you fill out your application. Please visit www.nipissingu.ca/intl or email internationaladmiss@nipissingu.ca for more information.

Proof of Proficiency in English

All applicants to Nipissing University undergraduate degree and post-baccalaureate programs (excluding BEd) from countries where the dominant language of instruction is other than English will be required to achieve the required minimum score on a test of English language proficiency for admission consideration. Permanent Resident applicants whose first language is not English may be required to provide proof of proficiency in English. Permanent Resident applicants whose first language is not English but who have lived at least three years in Canada, or a country where English is the dominant language may be exempt. Nipissing's full policy including minimum test scores and exemption policy can be found at nipissingu.ca/englishproficiency

International students should see our International Guide available at nipissingu.ca/intl



Application and Document Deadlines 2024

Program	For classes beginning in:	Application Deadline	Document Deadline
Fall Entry Only Programs			
Bachelor of Education – Consecutive	September	December 1	December 8 (transcripts) December 15 (supplemental documents)
Bachelor of Social Work – Professional Years		February 1	February 8 (4:30 pm EST)
Winter and Fall Entry Only Programs			
Bachelor of Commerce – College Partnership	January	November 15	
	September	August 6	
Bachelor of Science in Nursing RPN to BScN Bridging RPN to BScN Blended Delivery <i>(part-time/distance)</i>	January	October 13	October 20 (4:30 pm EDT)
	September*	March 22	April 5 (4:30 pm EDT)
*Bachelor of Science in Nursing / RPN Bridging / Blended Delivery Program applications for September 2024 will open on January 8, 2024.			
All Other Programs			
Winter	January	November 28	
Spring/Summer	May	April 5	
Fall – Full-Time	September	April 1	Applications for BScN, OMAH and BPHE will not be accepted after this date.
Fall – Part-Time	September	August 7	

Checklist (For Canadian applicants)

Check to see that you have your program admission requirements. To be considered for admission, be sure you will have earned all the required and/or recommended courses you need for admission to your program of choice.

○ Attend Fall Open House – November 4, 2023

You are invited! Spend the day with us and meet our faculty, staff and some of your peers. It's a great time to get answers to all of your questions about admissions, programs, and residence life. For updates and to register for Open House, visit nipissingu.ca/visitus

○ Apply online

Entry Point	Application
Winter	nipissingu.ca/registrarforms
Spring/Summer	nipissingu.ca/registrarforms
Fall – Full-time	ouac.on.ca
Fall – Part-time	nipissingu.ca/registrarforms

You will receive an email from Nipissing confirming receipt of your application.

○ Acknowledgement of your application

After you have applied through OUAC, you will receive an email from the Office of the Registrar at Nipissing to confirm that we've received your application and that you are being considered for admission to Nipissing. You will also receive information in the mail on how to check your document and application status through WebAdvisor.

○ Check the status of your application

WebAdvisor will show you any change in your application status. It will also help you keep track of any required documents for your application and/or offer of admission. Instructions on how to check your application status and required documents can be found at nipissingu.ca/applicationstatus

○ Send in documents

Nipissing requires official secondary and postsecondary transcripts to be sent directly from the issuing institution.

If applicable, send proof of English proficiency. Some programs require additional documentation. Be sure to read all information sent to you carefully to ensure you don't miss anything or any deadlines.

Check WebAdvisor to ensure receipt of all documentation received. If WebAdvisor shows Nipissing needs further information from you, documents can be sent directly to admissions@nipissingu.ca

○ Keep an eye on deadlines

See page 31 for important dates.

International students should see our International Guide available at nipissingu.ca/intl

Please check nipissingu.ca/futurestudents regularly for updates to events.

○ Attend March Open House – March 9, 2024

For updates and to register for Open House, visit nipissingu.ca/visitus

○ Offer of admission sent

Timing of offers will depend on program and entry point applied to. Be sure to read the package carefully. Important information is contained regarding deadlines and next steps. Remember to keep an eye on WebAdvisor. This is the first place you will see a decision made on your application. After your file becomes complete it can take 2-3 weeks to receive an admission decision on your file.

○ Accept offer of admission

Detailed instructions will be provided in your offer of admission on how to accept your offer. Be sure to accept by the deadline indicated on your offer.

○ Ensure we have your final transcript

Once received, we can start assessing your transfer. If you are taking courses at another institution, you will need to have additional transcripts sent when your classes are complete.

Official transcripts from Ontario universities and colleges can be ordered through your OUAC account. Transcripts from non-Ontario universities and colleges must be requested directly from the institution and be sent directly to Nipissing University. Transcripts can be sent by mail, fax (705-495-1772) or email (admissions@nipissingu.ca). Faxed and emailed transcripts will only be accepted when we can verify that they come directly to us from the issuing institution. Transcripts can only be accepted from an applicant if it is still sealed in the envelope from the academic institution. Be sure to read all information sent to you carefully to ensure you don't miss any deadlines or specific information for the program you were admitted to. Please ensure that you request transcripts with sufficient time to ensure final grades and/or degree/diploma conferral information will be recorded.

○ Transfer credit assessment

Transfer credit is assessed after you accept your offer of admission. Once completed, you will be able to view your transfer credit in WebAdvisor under Unofficial Transcript.

○ New Student Orientation (NSO)

Students starting in September attend NSO in July. NSO is a one-day program for all new students and their supporters, including mature and transfer students, who are starting programs in September. This is your opportunity to learn about all of the student academic, health, financial, and housing services available to support your success, and build connections to the Lakers community. You will be contacted directly with an invitation to attend. Child care is provided.

Students starting on-campus programs with a summer or winter entry are connected directly to a Student Experience Coordinator who will identify all of the support services and programs available.

Distance and off-campus students receive notification of available support services and programs through their Program Administrators.

○ Register for courses

Information on course registration will be emailed to you.



Come for a visit and see why you belong at Nipissing!

Open Houses*

Fall: Saturday, Nov 4, 2023

March Break: Saturday March 9, 2024

*Please check the website regularly for updates to events.

For more information and to register for Open House, visit nipissingu.ca/visitus

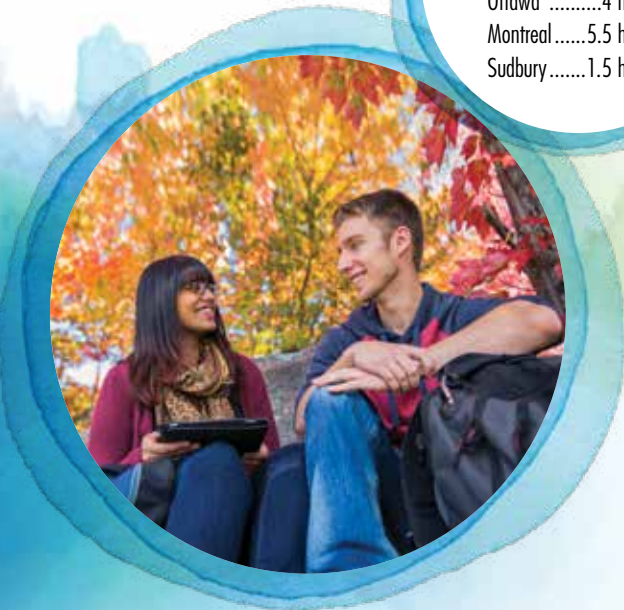
Book Your Own Campus Tour

Can't make it to an open house? Register for a campus tour offered throughout the week. Visit nipissingu.ca/visitus, call (705) 474-3450 ext. 4200 or email nuinfo@nipissingu.ca

Approximate Travel Times to North Bay:

Toronto3.5 hours
 Ottawa4 hours
 Montreal5.5 hours
 Sudbury1.5 hours

Explore our campus map with virtual tours and photos:
map.nipissingu.ca



nipissingu.ca/mature-transfer

- @NURecruitment
- @NipissingU
- @nipissing_university



ONE STUDENT AT A TIME

Student Recruitment Office • 100 College Drive, Box 5002, North Bay, ON P1B 8L7
 tel: (705) 474-3450 ext. 4200 • toll free (within Ontario): (800) 655-5154
nuinfo@nipissingu.ca • fax: (705) 495-1772 • tty: (877) 688-5507

If you would like to request this publication in an alternative format please contact the External Relations Office at (705) 474-3450 ext. 4078 or email marketing@nipissingu.ca